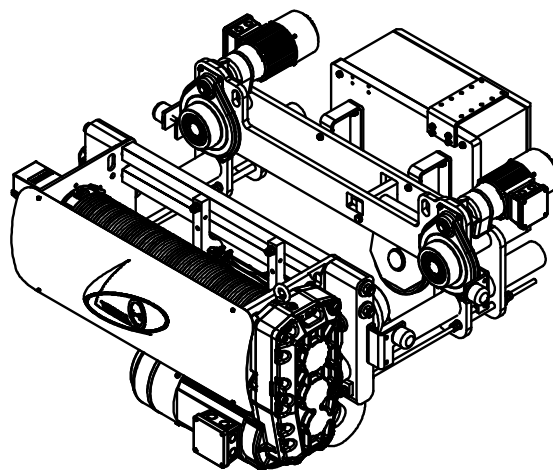
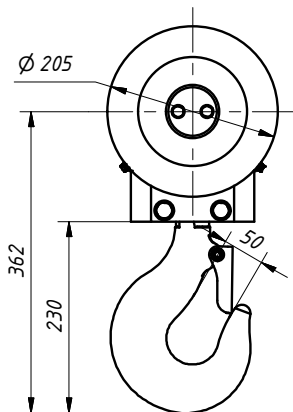
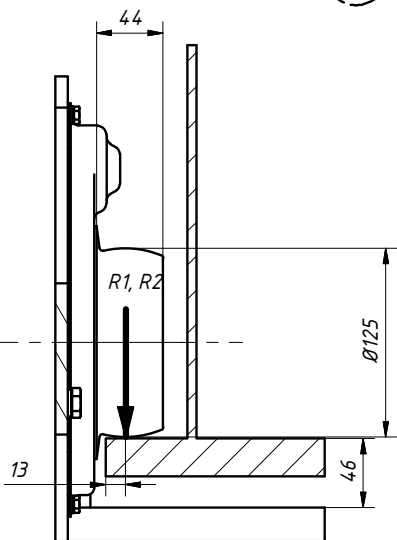
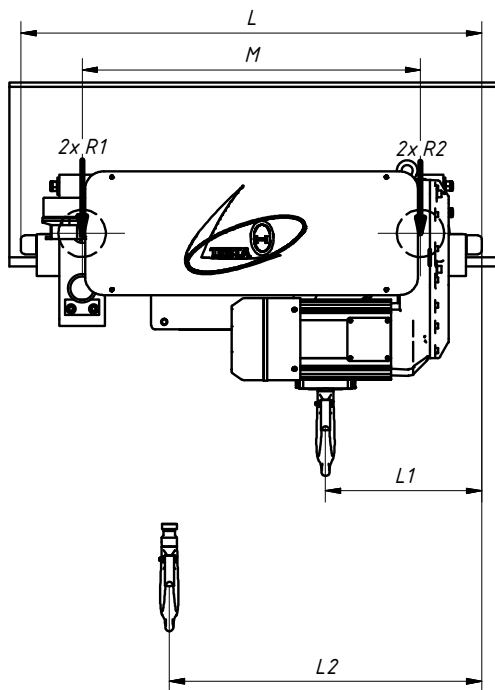
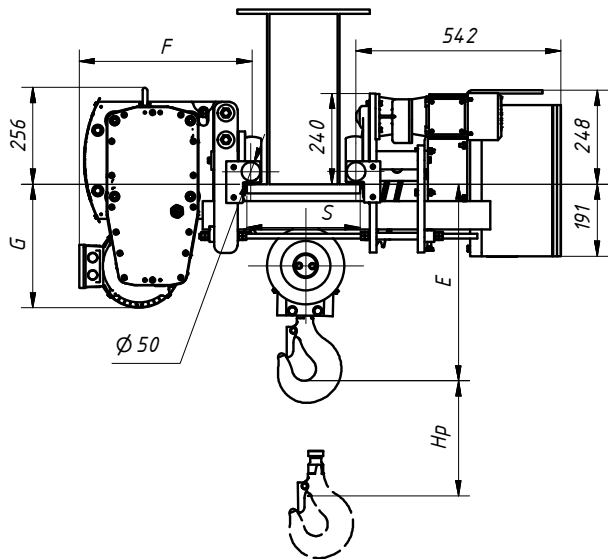




Wciągnik elektryczny linowy TH6300.Hp.vp.1Am.W1



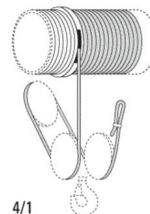
vp prędkość podn.	vp [m/min]	vj [m/min] prędkość jazdy	P [kW] moc podnoszenia	F [mm]	G [mm]	+m [kg]
A*	4/0,6	20/5	4,9/0,8	454	328	-

S [mm]	Emin [mm]
100-300	535
301-400	625
401-500	710

Hp [m]	L [mm]	L1 [mm]	L2 [mm]	m [kg]	M [mm]
6	1009	385	489	430	685
9	1219	385	540	440	895

Grupy nałężenia pracy					
vp	Q	3200 [kg]	4000 [kg]	5000 [kg]	6300 [kg]
A	3m	2m	2m	1Am	

Naciski kół jezdnych		
Hp [m]	R1 [kN]	R2 [kN]
6	10,9	22,1
9	8,4	24,7
6 bez obciążenia	0,9	1,2
9 bez obciążenia	1	1,2



4/1

* - inne prędkości na życzenie

Typ przekładni GHX 63